

# State of Wyoming Corner Record

(In compliance with the CORNER PERPETUATION AND FILING ACT, Wyoming Statutes, 1997 Section 33-29-140 et. seq., and the Rules and Regulations of the Board of Professional Engineers and Professional Land Surveyors)

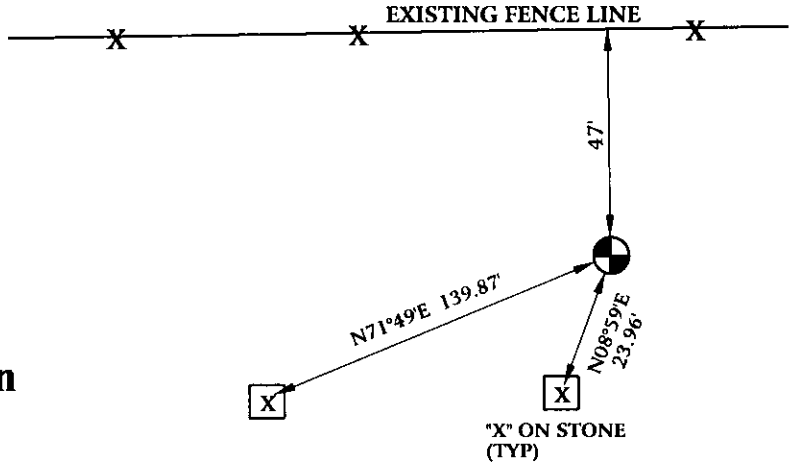
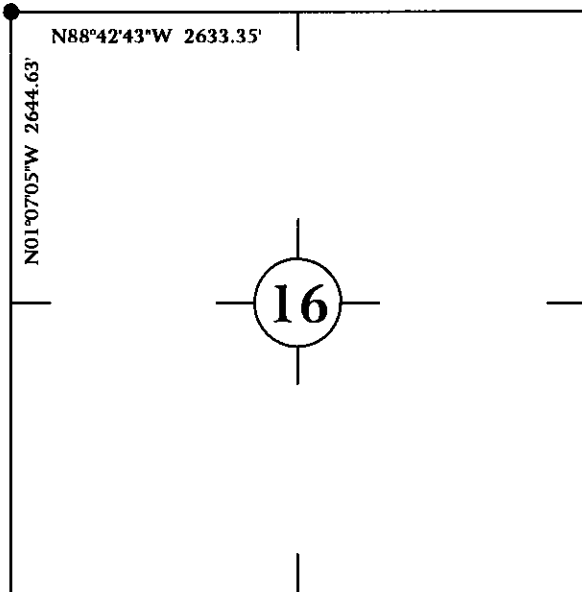
Reverse side of this form may be used if more space is needed.

Record of original survey and citation of source of historical information (if corner is lost or obliterated). Description of corner monumentation evidence found and/or monument and accessories established to perpetuate the location of this corner. Sketch of relative location of monument, accessories, and reference points with course and distance to adjacent corner(s) (if determined in this survey). Method and rationale for reestablishment of lost or obliterated corner.

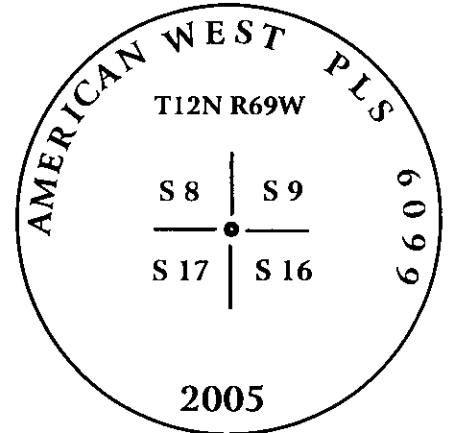
ORIGINAL CALL FOR 19" X 14" X 11" SANDSTONE.

FOUND 17" X 12" X 9" STONE WITH 3 FAINT MARKINGS ON WEST FACE.  
SET 3/4" X 30" REBAR WITH 3 1/4" ALUMINUM CAP P.L.S. 6099 AT LOCATION OF STONE,  
AND SET TIES AS SHOWN BELOW.

## Monument location



## Monument Inscription



3 1/4" ALUMINUM CAP  
ON 3/4" X 30" REBAR.

Date of Field Work: April 20, 2005

Office Reference: GALLEGOS05.pro

## Cross Index Plat

	1	2	3	4	5	6	7	8	9	10	11	12	13	14	15	16	17	18	19	20	21	22	23	24	25
A																									
B																									
C																									
D																									
E																									
F																									
G																									
H																									
I																									
J																									
K																									
L																									
M																									
N																									
O																									
P																									
Q																									
R																									
S																									
T																									
U																									
V																									
W																									
X																									
Y																									
Z																									

## Firm/Agency, Address

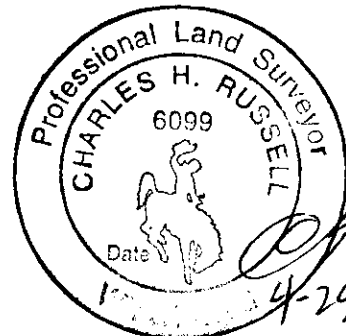
CHARLES H. RUSSELL P.L.S. 6099  
AMERICAN WEST LAND SURVEYING CO.  
29 SOUTH 4TH AVENUE  
BRIGHTON, CO 80601

## Telephone Number:

303-659-1532

This corner record was prepared  
by me or under my direction  
and supervision.

SEAL & SIGNATURE



RECORDED 6/22/2005 AT 12:36 PM REC# 420220 BK# 1888 PG# 1090  
DEBRA K. LATHROP, CLERK OF LARAMIE COUNTY, WY PAGE 1 OF 1

Corner Name Northwest Corner Section 16, T 12 N, R 69 W, 6th P.M.

Cross-Index No.: J-9

County: Laramie Wyoming

SBPPEPLS/PLSW: March 1994; PLSW January 1998